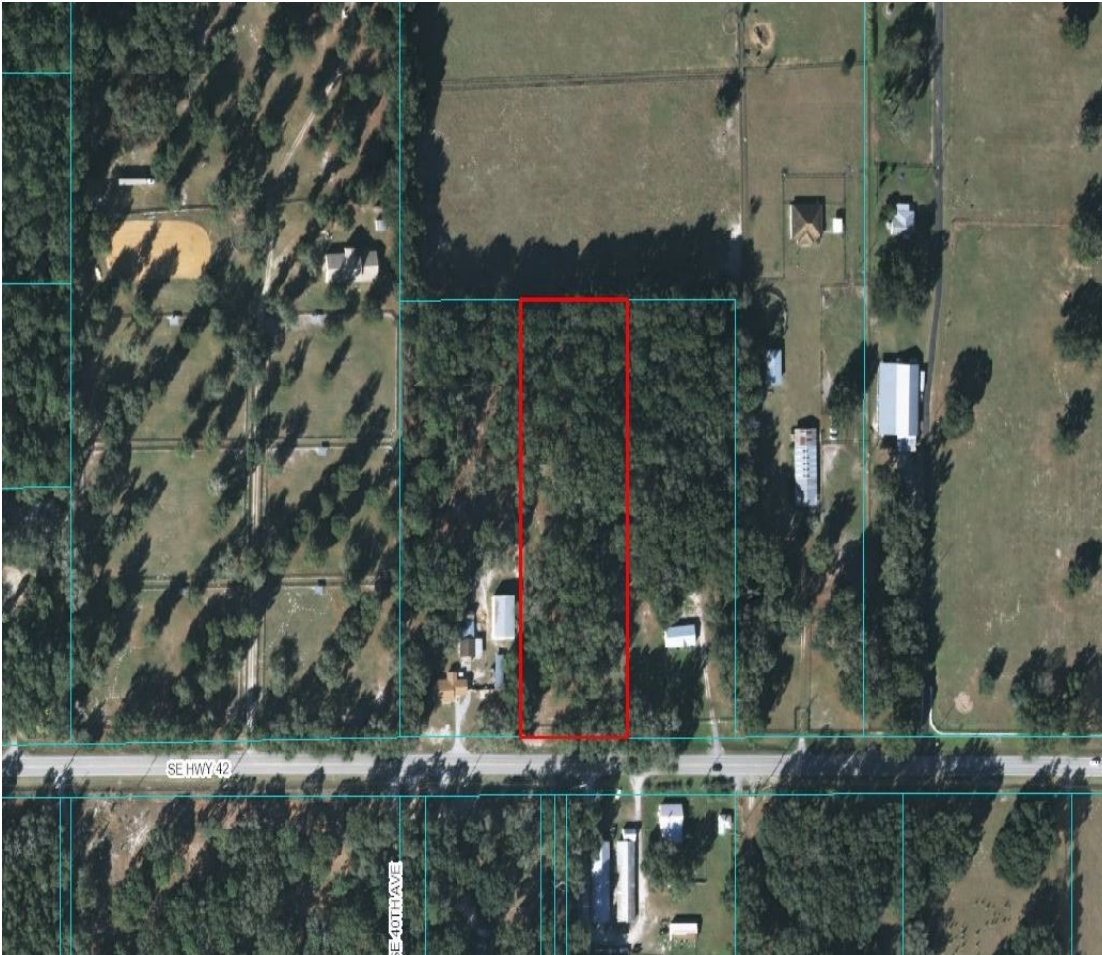


# 3.23 Acre Lot A-1 Zoning

0 SE Highway 42, Summerfield, FL



*Highway 42  
Summerfield  
Near The Villages*

*3.23 Acres  
213 ft Highway  
Frontage*

*Build Your New  
Home*

*Beautiful Grounds*

**Call Lori Busch  
352-804-5544**

## Highlights

- Price \$99,500.00
- Zoning: A-1
- Utility/Water– Well and Septic Needed
- 3.23 Acre
- 213 ft Frontage on Hwy 42
- Ideal for Church with special use from County

## Demographics

**Location:** CR 42 8 minutes from VA Clinic, Publix at Mulberry, Villages Sumter Landing

**Population:** 3 mile - 17,773  
5 mile - 49,511

**Average Household Income:** \$596,000

**Traffic Count:** CR 42 10,900